



**Black Horse Design
Resources LLC**
www.black-horse-dr.com



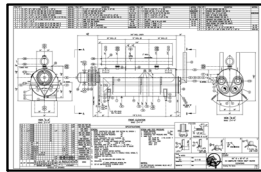
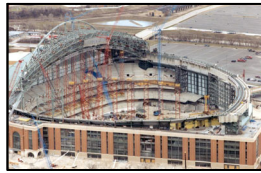
CAPABILITY STATEMENT

BHDR is a privately held, **Service-Disabled Veteran Owned Small Business**, located in Oklahoma. We are committed to excellence, integrity & safety in the fields of **Industrial, Mechanical, Civil, Structural, Process Piping, & Electrical design**. With 20+ years experience in the professional design fields, project management, purchasing, logistics & operations. We pride ourselves on providing quality services, on time solutions, within your budget, with client safety for all your design needs from start to finish. Working along with our strategic partners, we also offer engineering, and project management.

CORE DESIGN COMPETENCIES

STRUCTURAL

- Process Equipment Skids & Foundations;
- Pipe Racks;
- Walkways and Platforms;
- Equipment & Vessel Design & Fabrication.
- Modular & Skid Mounted Designs;
- External Vendor Drawing Reviews



PIPING & MECHANICAL

- Gas and Oil Facilities;
- Balance of Plant Layouts & Plot Plans;
- Amine and TEG;
- Cryogenic Facilities; Chemical Plants
- Process Flow Diagrams (PFD's)
- Process & Instrumentation Diagrams (P&ID's);
- Modular Piping Designs;
- Isometric Piping Fabrication Drawings;
- Orthographic Drawings;
- Wastewater Treatment; Water Filtration;
- Food Processing;
- Paper Pulp & other miscellaneous Plants.

CIVIL DESIGN

- Plot Plans;
- Site Development Designs;
- Surveys.

ARCHITECTURAL

- Municipal
- Residential
- Commercial

ELECTRICAL

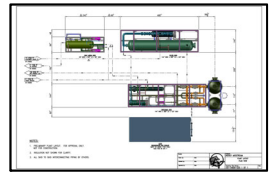
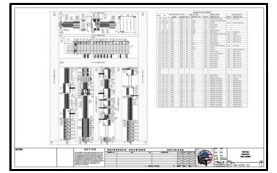
- One Line Drawings;
- Area Classification;
- Drawings; Cable Tray Sizing;
- Lighting Plans;
- PLC Design;
- PDC Building Design & Fabrication;
- Loop Diagrams.

CONTROLS

- PLC Panel Design & Fabrication;
- RIO / DIO Panel Design;
- Communication Panel Design.

R&D WORK

- Ideas brought to life with our practical and innovative designs.



MARKETS SERVED

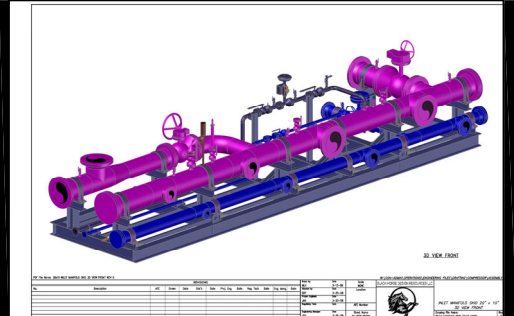
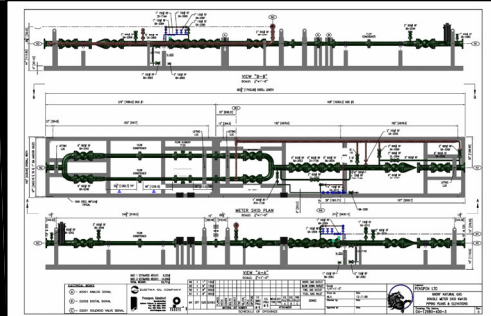
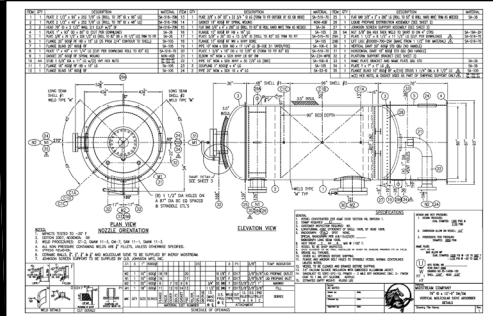
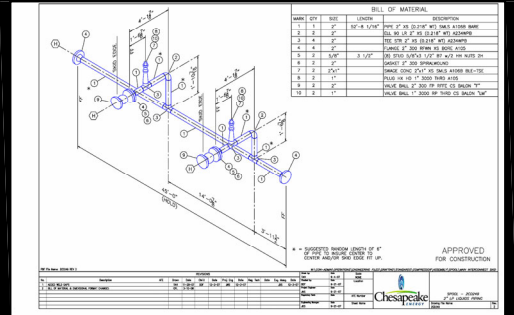
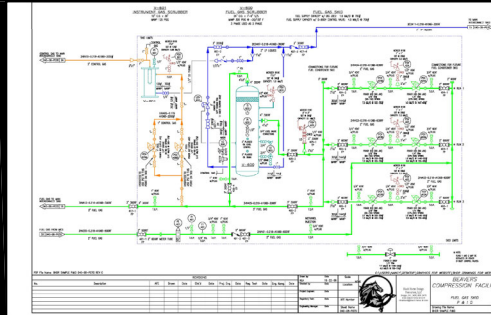
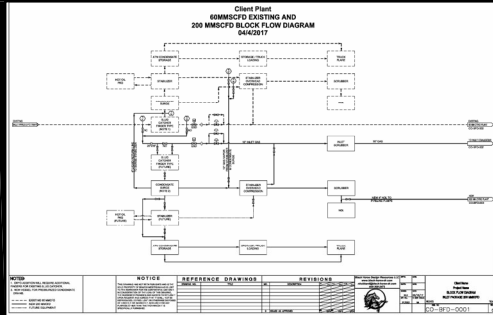
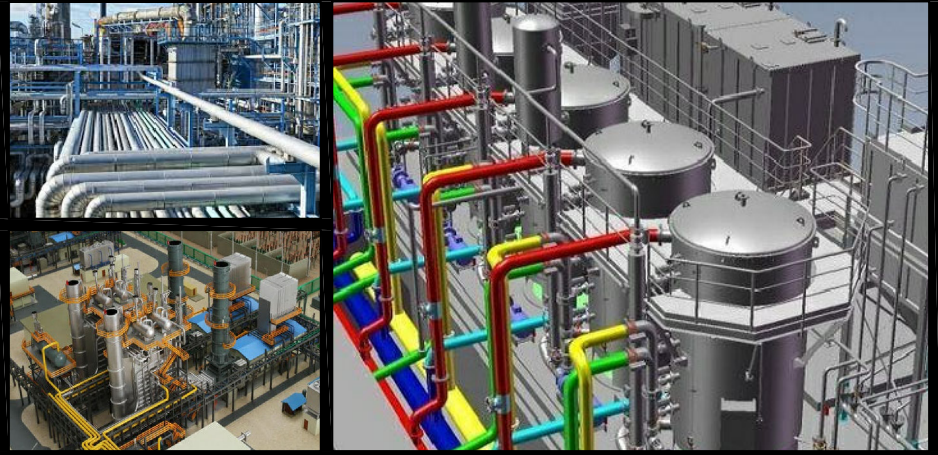
- Commercial - Mid and High Rise Towers,
- Industrial - Coca-Cola, CF Industries;
- Municipal - Judicial Expansions; Prisons; Churches;
- Residential - Large and Small Homes;
- Health Facilities - Hospitals; Dental Facilities;
- Theme Parks - Disney, Universal, Sea World
- Federal - NASA;
- US Defense - Aerospace;
- Shopping Centers - Pizza Hut, Walmart
- Big box Retail - Mercedes Benz, Dicks, Starbucks; Pizza Hut; Kentucky Fried Chicken

CURRENT & PREVIOUS CLIENTS



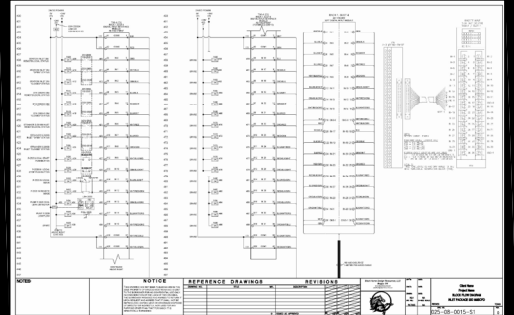
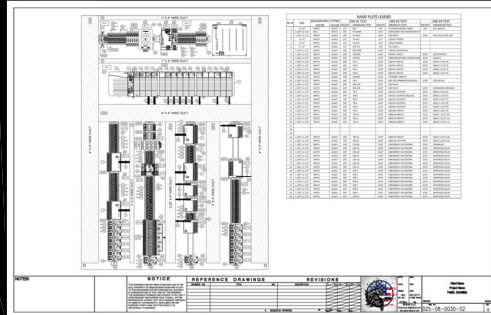
PROCESS PIPING , VESSEL & MODULAR EQUIPMENT DESIGN, RESEARCH & DEVELOPEMENT

- Gas and Oil Facilities; Balance of Plant Layouts & Plot Plans;
- Amine & TEG;
- Cryogenic Facilities;
- Chemical Plants.
- Process Flow Diagrams (PFD's)
- Process & Instrumentation Diagrams (P&ID's)
- Modular Piping Designs;
- Isometric Piping Fabrication Drawings;
- Orthographic Drawings;
- Wastewater Treatment Plants;
- Water Filtration Plants;
- Food Processing Plants;
- Paper Pulp Plants;



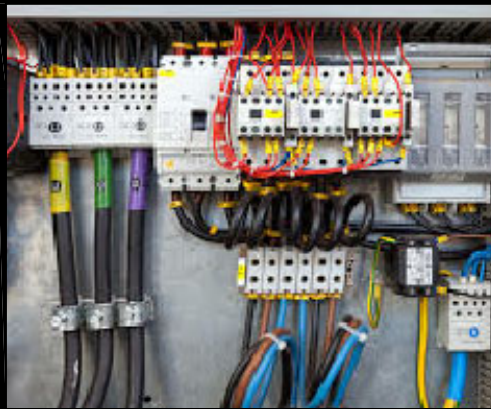
ELECTRICAL

- One Line Drawings, Area Class Drawings;
- Cable Tray Sizing;
- Lighting Plans;
- PLC Design;
- PDC Building Design;
- Loop Diagrams;



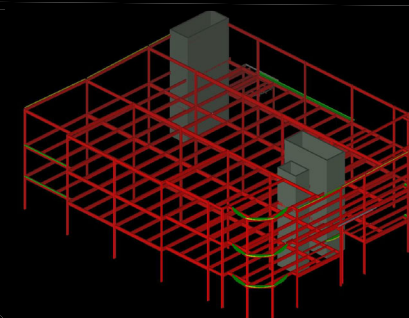
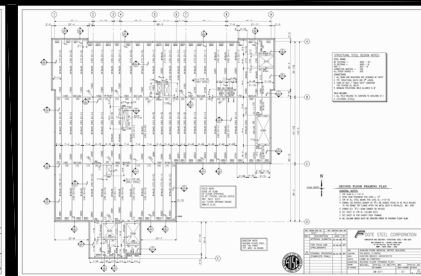
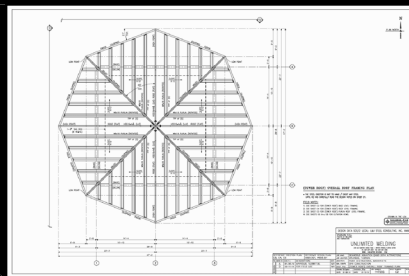
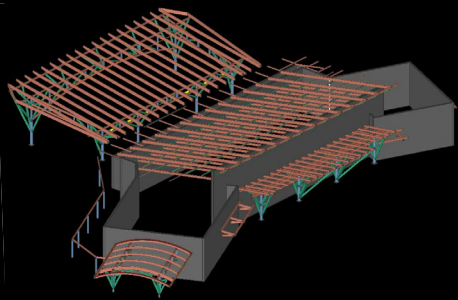
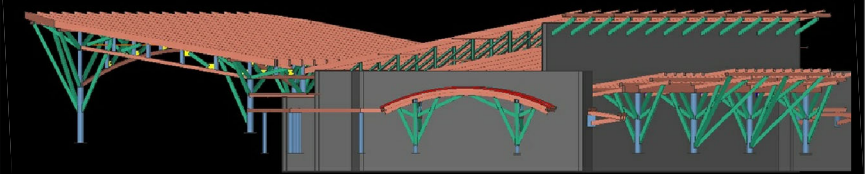
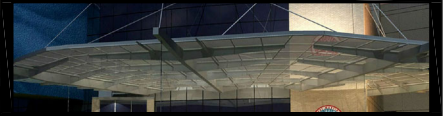
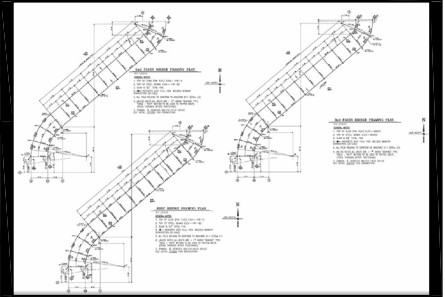
CONTROLS

- PLC Panel Design
- RIO / DIO Panel Design
- Communication Panel Design



STRUCTURAL ENGINEERING DESIGN

- AutoCad, SDS/2, AISC, NISD & Bid Design Assist;
- Design Build, Fabrication Consulting;
- Project Management, RFI's, RFQ's;
- Structural steel connection design; checker; design calculations; detailing drawings; erection drawings; fabrication drawings, & estimating;
- Pipe Racks; Walkways & platforms;
- Modular Equipment Skids; Equipment & Vessel Design & Fabrication; External Vendor Reviews & Drawing Checking;
- Oil & Gas Production Structures; Pipe Racks; Pipe Foundations; Pipe & Cable Tray Supports
- Communication Towers.



Black Horse Design Resources LLC (SDVOSB)

PRIMARY STAFF



Nancy Hubbard
Managing Member
Chief Principal Designer
25+ Years experience



Andrew Allen
Managing Member
Operations Manager
25+ Years experience



Randy Stockton
Principal Designer
25+ Years experience

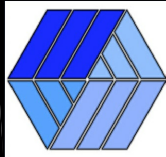


Joshua Hornick
Structural Steel Detailer
Principal Structural Designer
20+ Years Experience



Dave CoLangelo
Purchasing Manager
20 Years experience

STRATEGIC PARTNERS - Engineering Services are Provided by Strategic Partners listed below.



FULTON ENG CO
fultonengco@gmail.com
www.fultonengco.com
16206 S. Lewis Ave.
Bixby, Ok 74008-5303
Phone: 918-656-6277



COMPANY CONTACT INFORMATION

POC: Nancy Hubbard
PHONE: (405) 308-2473
EMAIL: black-horse-dr@hotmail.com
ADDRESS: 6011 ALT 75, Beggs, OK 74421
DUNS#: 114460524
VA CAGE CODE: 8LMS8

DESIGN SOFTWARE & CERTIFICATIONS

AUTOCAD Plant 3D Suite 2019, AutoCAD Mechanical 2019, Inventor 2019, Navis Works,

SDS/2 Structural Steel Detailing Software Module
SDS/2 Detailing Module Certificate, 1999 - 2000 Lincoln, NE

NAICS CODES

- 425120 Wholesale Trade Agents and Brokers.
- 541310 Architectural Services.
- 541320 Landscape Architectural Services.
- 541330 Engineering Services.
- 541420 Design & Drafting Services.
- 541420 Industrial Design Services.
- 541490 Other Specialized Design Services.
- 541512 Computer Systems Design Services Logistics.
- 541611 Admin & Gen Management Consulting Services.
- 541990 All Other Professional, Scientific, & Tech Services.
- 561320 Temporary Help Services.
- 921190 Other General Government Support Poured.
- 238110 Concrete Foundation & Structure Contractors.
- 238210 Electrical & Other Wiring Installation Contractors



Nancy Hubbard (405) 308-2473 - black-horse-dr@hotmail.com - www.black-horse.com
DUNS# - 114460524 - VA Cage Code: 8LMS8